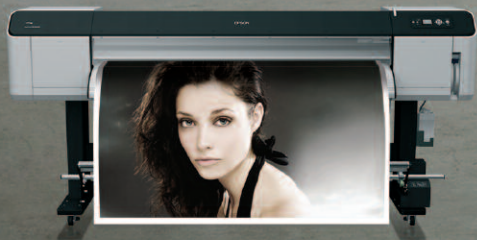


CREATE A BIG IMPRESSION



EPSON[®]
EXCEED YOUR VISION

THE NEW STANDARD IN SOLVENT PRINTING

Create large-scale, long-lasting prints that are breathtaking to look at with our first solvent 64" wide printer. With its new Epson UltraChrome™ GS 8-colour ink set, the Epson Stylus Pro GS6000 is more user-friendly, cleaner and safer – which is much better for the environment too.

It's perfect for professionals who need to print at high speeds on a wide range of coated and uncoated media, including vinyl. Whatever you print, you can be sure it will make a big impact wherever it's displayed.

ADD SPEED, QUALITY AND DURABILITY TO SIGNAGE AND FINE ART PRINTING

Whether you're designing a stand, producing billboard ads or preparing an art exhibition, the Epson Stylus Pro GS6000 gives you serious support. It combines our leading ink and hardware technologies to give you fantastic results at very high speeds.

When you need to produce long-lasting prints that grab attention day after day, this printer clearly shows why we're the professionals' choice and a market leader in large format printing.



BREATHTAKING RESULTS

EPSON ULTRACHROME
GS INK

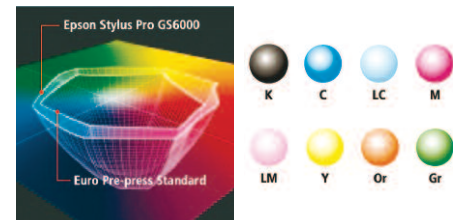
Rely on incredible precision and consistent photographic quality with Epson UltraChrome™ GS Ink and Epson Micro Piezo™ technology. Whatever your subject, the 8-colour ink set gives you an extremely wide colour gamut for life-like results.

This is industry-quality printing. Inks are quick drying, colours are fixed and stable, and your prints have superior scratch resistance, so they'll be fresh and grab people's attention for longer.

- **Print on coated or uncoated media**
- **Less harmful for the environment and users**
- **Wide printhead with 360 nozzles per colour**

See the difference with 8-colour Epson UltraChrome™ GS Ink including Orange and Green.

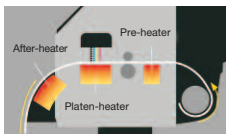
Adding these two colours gives a wider colour gamut for great quality photographic prints and custom spot colours.



8-colour solvent inks create a wider colour gamut for a superior photographic finish.

Dual-Array Micro Piezo™ printheads work fast and maximise quality by placing different sized dots with amazing accuracy

3 individual, digitally controllable heaters improve ink adhesion, stabilise dot shape formation and speed up drying



Low graininess means ultra-smooth gradations and colour blending for true photo quality



EFGH

EFGH

Epson Stylus Pro GS6000

Other conventional solvent printers



FAST, RELIABLE COLOUR

The Epson Stylus Pro GS6000 enhances your productivity at every stage. Thanks to Epson Dual-Array Micro Piezo™ AMC printheads, 'hot-swappable' 950 ml ink cartridges, a host of paper handling options and three built-in heaters, you can print up to 25 m²/hr.

This is also high performance you can trust, with excellent reliability and innovative systems that minimise daily user maintenance and help you to meet the tightest of deadlines.

- High speed printing up to 25 m²/hr (5.5 m²/hr high-quality mode)
- Auto take-up reel for unattended production of large print runs
- Spindleless roll media support
- Intelligent maintenance with auto cleaning system

Epson Variable-sized Droplet technology gives you maximum quality at high speed.

It works with Advanced Meniscus Control (AMC) to place perfectly formed droplets with excellent precision, using large droplets for areas of block colour and smaller droplets for areas of high detail.



Vibrant.
Elegant.
Lasting.

Status warning light keeps you informed from a distance for minimal printer downtime

For uninterrupted printing the Epson Stylus Pro GS6000 uses 'hot-swappable' 950 ml ink cartridges that can be replaced during printing



ECO FRIENDLY CHOICE



The Epson Stylus Pro GS6000 is easy on its users and the environment. Our solvent inks are nickel-free, virtually odourless and don't spread harmful volatile organic compounds (VOCs).

Energy efficient, it consumes less energy than conventional solvent-based printers. With built-in heaters there's no need for separate driers, so it uses less electricity which means it's good for business and the environment.

- **Virtually odourless, nickel-free inks**
- **Low VOCs conform to EU Directive 1999/45/EC**
- **Use less energy, save electricity and money**

The Epson Return and Recycle programme collects used printer cartridges for recycling.

With this free box collection service, you are able to dispose of your used cartridges and take an active role in reducing waste. 100% of the cartridges collected are recycled.

For more details please visit www.epson-europe.com/environment/collectandrecycle/



An ink cartridge recycling box is included with this printer so you can start recycling straight away

Lower energy consumption reduces CO₂ emissions and saves money

Epson UltraChrome™ GS Ink is 100% free of carcinogenic nickel compounds and virtually odourless, so no special ventilation is required



INTELLIGENT PRINTING



myEpsonPrinter.eu

This printer fits easily into your office or studio set-up. It includes USB 2.0 and Gigabit Ethernet connectivity, and is fully supported by most leading third-party RIPs and workflows.

It also includes free access to the 'MyEpsonPrinter.eu' web-based information and management system, which gives you the power to remotely monitor all aspects of your printer, and control your production cost effectively.

- Three separate power units – printer, heating system and take-up reel
- Free access to the MyEpsonPrinter.eu advanced web-based printer information and management system
- True remote monitoring and alert system

Stay connected and in control of your printer with MyEpsonPrinter.eu

This web-based solution helps you to manage your fleet of Epson large format printers online. Access up-to-date status and job cost information, receive e-mail notification of issues such as low ink levels and keep your printers at their most productive and cost effective wherever you are.

Subscribe to the Epson Return & Recycle program as a myepsonprinter.eu member and you can earn additional benefits for returning your empty ink cartridges. For more details please visit www.myepsonprinter.eu



Accuracy.
Functionality.
Reliability.

Get connected with standard USB 2.0 and Gigabit Ethernet ports, and full support from most third-party RIPs and workflows

Built-in heaters mean there's no need for a separate drier

PRODUCT DIMENSIONS AND SPECIFICATIONS

PRINTING TECHNOLOGY Printhead Nozzle configuration Print direction	Dual-Array Micro Piezo™ Printhead 8-channel, drop-on-demand inkjet printhead 360 nozzles each colour Bi-directional printing, uni-directional printing
PRINT RESOLUTION Maximum resolution Minimum ink droplet size	1440x1440 dpi (with Variable-sized Droplet Technology) 3.7 pl
INK SYSTEM Ink Colour Ink capacity Ink cartridge	Epson UltraChrome™ GS Ink technology Cyan, Magenta, Yellow, Black, Light Cyan, Light Magenta, Orange, Green 950 ml Hot-swappable ink system
PRINT SPEED Vinyl high-quality mode Vinyl production mode Banner production mode	5.8 m²/hr (1440x720 dpi) 9.2 m²/hr (540x720 dpi) 25.2 m²/hr (720x360 dpi)
MEDIA Roll media dimension Maximum roll weight Maximum thickness Media width Roll core size Auto take-up reel	ø170 mm (maximum outside diameter) 30 kg 1.3 mm Roll: 210-1626 mm 3" core available as standard
HEATING SYSTEM Heaters Heater locations Heater settable temperature	Three individual heat control systems Pre-heater, platen-heater, post-heater off / 30°C-50°C (pre-heater, platen-heater, post-heater)
INTERFACE	USB 2.0 (compatible with 1.1), Gigabit ethernet
LANGUAGES	ESC/P2 Raster
MEMORY	320 MB
ENVIRONMENTAL RANGE Temperature Humidity	20-32°C (operating) 22-32°C (print quality guarantee) -10 to 40°C (storage) 40 to 60% relative humidity (operating) 40 to 60% relative humidity (print quality guarantee) 20 to 80% relative humidity (storage)
DIMENSIONS/WEIGHT Dimension (WxDxH) Weight	2698x943x1267 mm Approx. 202 kg
ELECTRICAL SPECIFICATIONS Voltage Power consumption	AC 100-120V / 220-240V Operating with heater: 680W Standby with heater off: 40W (100-120V), 48W (200-240V), Sleep: 24W
ACOUSTIC NOISE LEVEL Active Standby	54.79 dB (A) 42.79 dB (A)
OPTIONS Maintenance kit C12C890611 Ink cleaner C12C890621 Carrying bar C12C890541 Maintenance tank 7104422	2 Plastic gloves, 12 Cleaning sticks, 1 Flushing pad Ink remover 250 ml, 12 Plastic gloves, 1 Plastic cup A pair of bars, needed when assembling the unit 2000 ml capacity waste collection tank
MODELS Basic Pro	Printer only Printer including ONYX® PosterShop® software
WARRANTY	Standard: 1 year on-site service (printhead included) Different optional extension programs available, contact your local dealer for details

EPSON STYLUS PRO GS6000

WHAT'S IN THE BOX

- Epson Stylus Pro GS6000
- 2 Plastic gloves
- 4 Cleaning sticks
- 1 Flushing pad
- 1 Stainless tray

● 1 Black	350 ml
● 1 Cyan	350 ml
● 1 Magenta	350 ml
● 1 Yellow	350 ml
● 1 Light Cyan	350 ml
● 1 Light Magenta	350 ml
● 1 Green	350 ml
● 1 Orange	350 ml
8 Cleaning cartridges	

INK CARTRIDGES

950 ml INK CARTRIDGES

● Black	C13T624100
● Cyan	C13T624200
● Magenta	C13T624300
● Yellow	C13T624400
● Light Cyan	C13T624500
● Light Magenta	C13T624600
● Green	C13T624700
● Orange	C13T624800
Cleaning cartridge	C13T623000



For further information please contact your local Epson office or visit www.epson-europe.com

Austria 0810/20 01 13 (0,07 €/Min.) Belgium 070/350120 (0.1735 €/min.) Czech 800/142 052 Denmark 44 50 85 85 Finland 0201 552 091 France 09 74 75 04 04 (0,12€/min)
 Germany 01805/23 41 10 (0,14 €/Min.) Greece 210-8099499 Hungary 06800 147 83 Ireland 01 436 7742 Italy 02-660321 10 (0,12 €/min.) Luxembourg 900/43010 (0,24 €/min.)
 Middle East +9714 8818934 Netherlands 0900-5050808 (0,05 €/oproep + 0,15 €/min.) Norway 22 06 42 80 Poland 0-0-800 4911299 (0,16 zł/min.) Portugal 707 222 111
 Russia (095) 777-03-55 Slovakia 0850 111 429 South Africa (+2711) 465-9621 Spain 93 582 15 00 Sweden 0771-400135 (Mobilsamtal – 0,99 kr/min, Lokala samtal –
 0,30 kr/min, Utlandssamtal – 0,89 kr/min) Switzerland 0848 448820 (4-8 cent./min.) Turkey (0212) 3360303 United Kingdom 0871 222 6702

Trademarks and registered trademarks are the property of Seiko Epson Corporation or their respective owners.
 Product information is subject to change without prior notice.

EPSON®